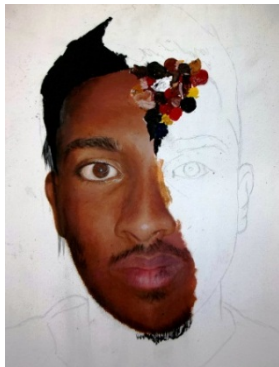




FINE ART



At Beal High School, Art students will follow the **AQA** course in **Fine Art**. At AS level, candidates will follow a course of integrated practical, critical and theoretical study using a variety of media and processes, from drawing to 3d outcomes. This will be supported by the use of sketchbooks and first- hand experience of relevant works of art, together with any other form of appropriate evidence. The full A level course is designed to build on strengths gained through the first year of the course structure, allowing for greater depth of study. **It is an essential course to pursue for anyone interested in a design based career** as you will be required to produce a portfolio to take with to you in some instances when applying for Art Foundation or

degree course in Art related areas. It will involve the completion of a summer project for the start of the academic year.

AQA AS SPECIFICATION

COMPONENT TITLE	REQUIREMENTS	DURATION	WEIGHTING
Coursework	UNIT 1	Sept- January	60% AS Level marks
Externally set Assignment	UNIT 2	February – May final 10 hours exam	40% AS Level marks

The focus on AS is on “Process”, the journey that you make when trying out your ideas and experimenting with materials and this requires good organisational skills.

The AQA A Level SPECIFICATION allows you to develop

COMPONENT TITLE	REQUIREMENTS	DURATION	WEIGHTING
<i>Personal Investigation with supporting written essay-1000 – 3000 words (unit1)</i>	<i>UNIT 1 written and visual tasks support one another</i>	Sept- January	<i>60 % of A Level marks</i>
<i>Externally set Assignment (unit 2)</i>	<i>UNIT 2</i>	February – May final 15 hours exam	<i>40% of A Level marks</i>

Course Expectations:

The course is demanding and requires candidates to work independently, using an agreed period of unsupervised sessions to develop and build up skills.

You will be expected to take a very independent approach to your studies, logging your learning and committing yourself to additional learning within the Department in self-directed hours. You will be expected to visit relevant galleries and museums to support class based learning experiences with up to 4-6 hours extra.

A full list of required materials and equipment list is available.